



Series **3HKP3B/C**



**SET~4**

Code No. **91**

**Roll No.**

--	--	--	--	--	--	--	--

Candidates must write the Code on the title page of the answer-book.

**NOTE :**

- (i) Please check that this question paper contains **13** printed pages.
- (ii) Code number given on the right hand side of the question paper should be written on the title page of the answer-book by the candidate.
- (iii) Please check that this question paper contains **40** questions.
- (iii) Please write down the serial number of the question in the answer-book before attempting it.
- (iv) 15 minute time has been allotted to read this question paper. The question paper will be distributed at 10.15 a.m. From 10.15 a.m. to 10.30 a.m., the students will read the question paper only and will not write any answer on the answer-book during this period.

**COMPUTER SCIENCE (NEW)**



Time allowed : 3 hours



Maximum Marks : 70



**General Instructions :**

- (i) This question paper contains **two** parts — Part A and B. Each part is compulsory.
- (ii) Both Part A and Part B have choices.
- (iii) Part A has **two** sections :
  - a. Section I is short answer questions, to be answered in one word or one line.
  - b. Section II has **two** case study-based questions. Each case study has 5 case-based subparts. An examinee is to attempt any **4** out of the 5 subparts.
- (iv) Part B is Descriptive Paper.
- (v) Part B has **three** sections :
  - a. Section I is short answer questions of **2** marks each in which **two** questions have internal options.
  - b. Section II is long answer questions of **3** marks each in which **two** questions have internal options.
  - c. Section III is very long answer questions of **5** marks each in which **one** question has an internal option.
- (vi) All programming questions are to be answered using Python Language only.

**PART A**  
**Section I**

Select the most appropriate option out of the options given for each question. Attempt any **15** questions from questions no. **1** to **21**.

- 1. Which of the following options is/are **not** Python Keywords ? 1
  - (A) **False**
  - (B) **Math**
  - (C) **WHILE**
  - (D) **break**
  
- 2. Given the dictionary `D={'Rno': 1, 'Name': 'Suraj'}` , write the output of `print(D['Name'])`. 1
  
- 3. Identify the statement(s) from the following options which will raise TypeError exception(s) : 1
  - (A) `print('5' * 3)`
  - (B) `print( 5 * 3)`
  - (C) `print('5' + 3)`
  - (D) `print('5' + '3')`



4. Identify the valid relational operator(s) in Python from the following : 1
- (A) =  
(B) <  
(C) <>  
(D) not
5. For a string S declared as `S = 'PYTHON'`, which of the following is incorrect ? 1
- (A) `N=len(S)`  
(B) `T = S`  
(C) `'T' in S`  
(D) `S[0] = 'M'`
6. Write a single line statement in Python to assign the values 'BLUE', 'GREEN', 'RED' to a tuple named `Colours` . 1
7. A List is declared as `L = ['ONE', 'TWO', 'THREE']`  
What will be the output of the statement ? 1  
`print(max(L))`
8. Write the name of the built-in function/method of the **math module** which when executed upon 5.8 as parameter, would return the nearest smaller integer 5. 1
9. In context of Communication Networks, which of the following is the correct expansion for the abbreviation PAN : 1
- (A) Prime Area Network  
(B) Post Application Network  
(C) Picture Application Network  
(D) Personal Area Network
10. In context of Cyber Crimes and Cyber Thefts, the term IPR refers to : 1
- (A) Internet Protocol Rights  
(B) Inter Personnel Rights  
(C) Intellectual Property Rights  
(D) Individual Property Rights
11. In SQL, write the name of the aggregate function which will display the cardinality of a table. 1
12. Which of the following clauses in SQL is most appropriate to use to select matching tuples in a specific range of values ? 1
- (A) IN  
(B) LIKE  
(C) BETWEEN  
(D) IS



13. Which of the following is *not* a valid datatype in SQL ? 1
- (A) **DATE**
  - (B) **STRING**
  - (C) **DECIMAL**
  - (D) **CHAR**
14. Which of the following is *not* a valid DML command in SQL ? 1
- (A) **INSERT**
  - (B) **UPDATE**
  - (C) **ALTER**
  - (D) **DELETE**
15. Which of the following wireless transmission media is best suited for MAN ? 1
- (A) Microwave
  - (B) Radio Link
  - (C) Infrared
  - (D) Bluetooth
16. Which of the following is/are immutable object type(s) in Python ? 1
- (A) List
  - (B) String
  - (C) Tuple
  - (D) Dictionary
17. What shall be the output for the execution of the following Python Code ? 1
- ```
Cities = ['Delhi', 'Mumbai']  
Cities[0], Cities[1] = Cities[1], Cities[0]  
print(Cities)
```
18. Which of the following commands in SQL is used to add a new record into a table ? 1
- (A) **ADD**
  - (B) **INSERT**
  - (C) **UPDATE**
  - (D) **NEW**
19. Which of the following is the correct expansion of DML in context of SQL ? 1
- (A) Direct Machine Language
  - (B) Data Mixing Language
  - (C) Distributed Machine Language
  - (D) Data Manipulation Language



20. Which of the following statements correctly explains the term Firewall in context of Computer Network Society ? 1
- (A) A device that protects the computer network from catching fire.
- (B) A device/software that controls incoming and outgoing network traffic.
- (C) Using abusive language on a social network site.
- (D) Stealing someone's text and submitting it as his/her own work.
21. Which of the following protocols allows the use of HTML on the World Wide Web ? 1
- (A) HTTP
- (B) PPP
- (C) FTP
- (D) POP

### Section II

*Both the case study-based questions are compulsory. Attempt any 4 sub-parts from each question. Each question carries 1 mark.*

22. Anmol maintains that database of Medicines for his pharmacy using SQL to store the data. The structure of the table PHARMA for the purpose is as follows :

- **Name of the table - PHARMA**
- **The attributes of PHARMA are as follows :**

MID - numeric

MNAME - character of size 20

PRICE - numeric

UNITS - numeric

EXPIRY - date

Table : PHARMA

| MID | MNAME       | PRICE | UNITS | EXPIRY     |
|-----|-------------|-------|-------|------------|
| M1  | PARACETAMOL | 12    | 120   | 2022-12-25 |
| M2  | CETRIZINE   | 6     | 125   | 2022-10-12 |
| M3  | METFORMIN   | 14    | 150   | 2022-05-23 |
| M4  | VITAMIN B-6 | 12    | 120   | 2022-07-01 |
| M5  | VITAMIN D3  | 25    | 150   | 2022-06-30 |
| M6  | TELMISARTAN | 22    | 115   | 2022-02-25 |

- (a) Write the degree and cardinality of the table PHARMA. 1
- (b) Identify the attribute best suitable to be declared as a primary key. 1



- (c) Anmol has received a new medicine to be added into his stock, but for which he does not know the number of UNITS. So he decides to add the medicine without its value for UNITS. The rest of the values are as follows :

| MID | MNAME      | PRICE | EXPIRY     |
|-----|------------|-------|------------|
| M7  | SUCRALFATE | 17    | 2022-03-20 |

Write the SQL command which Anmol should execute to perform the required task.

1

- (d) Anmol wants to change the name of the attribute UNITS to QUANTITY in the table PHARMA. Which of the following commands will he use for the purpose ?

1

- (i) UPDATE
- (ii) DROP TABLE
- (iii) CREATE TABLE
- (iv) ALTER TABLE

- (e) Now Anmol wants to increase the PRICE of all medicines by 5. Which of the following commands will he use for the purpose ?

1

- (i) UPDATE SET
- (ii) INCREASE BY
- (iii) ALTER TABLE
- (iv) INSERT INTO

23. Roshni of Class 12 is writing a program in Python for her project work to create a CSV file "Teachers.csv" which will contain information for every teacher's Identification Number, Name for some entries. She has written the following code. However, she is unable to figure out the correct statements in a few lines of the code, hence she has left them blank. Help her to write the statements correctly for the missing parts in the code.

```

import _____ # Line 1
def addrec(Idno, Name): # to add record into the CSV file
    f=open("Teachers.csv", _____) # Line 2
    Filewriter = CSV.writer(f)
    Filewriter.writerow([Idno,name])
    f.close()
def readfile(): # to read the data from CSV file
    f=open("Teachers.csv", _____) # Line 3
    FileReader = CSV._____ (f) # Line 4
    for row in FileReader:
        print(row)
    f._____ # Line 5

```



- (a) Name the module she will import in Line 1. 1
- (b) In which mode will she open the file to add data into the file in Line 2 ? 1
- (c) In which mode will she open the file to read the data from the file in Line 3 ? 1
- (d) File in the blank in Line 4 to read the data from a CSV file. 1
- (e) Fill in the blank in Line 5 to close the file. 1

## PART B

### Section I

24. Evaluate the following Python expressions : 2
- (a) `2 * 3 + 4 ** 2 - 5 // 2`
- (b) `6 < 12 and not (20 > 15) or (10 > 5)`
25. (a) What are cookies in a web browser ? Write one advantage and one disadvantage of enabling cookies in a web browser. 2

### OR

- (b) Differentiate between the terms Domain Name and URL in context of web services. Also write one example of each to illustrate the difference. 2
26. Expand the following terms in context of Computer Networks : 2
- (a) PPP
- (b) VoIP
- (c) GSM
- (d) WLL
27. (a) Explain the use of positional parameters in a Python function with the help of a suitable example. 2

### OR

- (b) Explain the use of a default parameter in a Python function with the help of a suitable example. 2
28. Rewrite the following code in Python after removing all syntax error(s) : 2
- Underline each correction done in the code.

```
Runs = ( 10, 5, 0, 2, 4, 3 )
for I in Runs:
    if I=0:
        print(Maiden Over)
    else
        print(Not Maiden)
```



29. What possible output(s) is/are expected to be displayed on the screen at the time of execution of the program from the following code ? Also specify the maximum and minimum value that can be assigned to the variable R when K is assigned value as 2. 2

```
import random
Signal = [ 'Stop', 'Wait', 'Go' ]
for K in range(2, 0, -1):
    R = randrange(K)
    print (Signal[R], end = ' # ')
```

- (a) Stop # Wait # Go #
  - (b) Wait # Stop #
  - (c) Go # Wait #
  - (d) Go # Stop #
30. What are Tuples in a SQL Table ? Write a suitable example with a SQL Table to illustrate your answer. 2

31. For the following SQL Table named **PASSENGERS** in a database **TRAVEL** :

| TNO | NAME           | START  | END     |
|-----|----------------|--------|---------|
| T1  | RAVI KUMAR     | DELHI  | MUMBAI  |
| T2  | NISHANT JAIN   | DELHI  | KOLKATA |
| T3  | DEEPAK PRAKASH | MUMBAI | PUNE    |

A cursor named **Cur** is created in Python for a connection of a host which contains the database **TRAVEL**. Write the output for the execution of the following Python statements for the above SQL Table **PASSENGERS** : 2

```
Cur.execute('USE TRAVEL')
Cur.execute('SELECT * FROM PASSENGERS')
Recs=Cur.fetchall()
for R in Recs:
    print(R[1])
```

32. Write the names of any two constraints and their respective uses in SQL. 2





33. Write the output for the execution of the following Python code :

2

```
def change (A) :  
    S=0  
    for i in range (len(A)//2) :  
        S+=(A[i]*2)  
    return S  
B = [10,11,12,30,32,34,35,38,40,2]  
C = Change (B)  
Print('Output is',C)
```

## Section II

34. Write the definition of a function **Sum3(L)** in Python, which accepts a list **L** of integers and displays the sum of all such integers from the list **L** which end with the digit 3.

3

For example, if the list **L** is passed

```
[ 123, 10, 13, 15, 23]
```

then the function should display the sum of 123, 13, 23, i.e. 159 as follows :

```
Sum of integers ending with digit 3 = 159
```

35. (a) Write the definition of a function **ChangeGender()** in Python, which reads the contents of a text file "**BIOPIC.TXT**" and displays the content of the file with every occurrence of the word '**he**' replaced by '**she**'. For example, if the content of the file "**BIOPIC.TXT**" is as follows :

3

```
Last time he went to Agra,  
there was too much crowd, which he did not like.  
So this time he decided to visit some hill station.  
The function should read the file content and display the output as follows :  
Last time she went to Agra,  
there was too much crowd, which she did not like.  
So this time she decided to visit some hill station.
```

OR



- (b) Write the definition of a function `Count_Line()` in Python, which should read each line of a text file "`SHIVAJI.TXT`" and count total number of lines present in text file. For example, if the content of the file "`SHIVAJI.TXT`" is as follows :

3

`Shivaji was born in the family of Bhonsle.`

`He was devoted to his mother Jijabai.`

`India at that time was under Muslim rule.`

The function should read the file content and display the output as follows :

`Total number of lines : 3`

36. Write the outputs of the SQL queries (i) to (iii) based on the relations `CUSTOMER` and `TRANSACTION` given below :

3

Table : `CUSTOMER`

| ACNO | NAME    | GENDER | BALANCE |
|------|---------|--------|---------|
| C1   | RISHABH | M      | 15000   |
| C2   | AAKASH  | M      | 12500   |
| C3   | INDIRA  | F      | 9750    |
| C4   | TUSHAR  | M      | 14600   |
| C5   | ANKITA  | F      | 22000   |

Table : `TRANSACTION`

| ACNO | TDATE      | AMOUNT | TYPE   |
|------|------------|--------|--------|
| C1   | 2020-07-21 | 1000   | DEBIT  |
| C5   | 2019-12-31 | 1500   | CREDIT |
| C3   | 2020-01-01 | 2000   | CREDIT |

- (i) `SELECT MAX (BALANCE) , MIN (BALANCE) FROM CUSTOMER  
WHERE GENDER = 'M' ;`
- (ii) `SELECT SUM (AMOUNT) , TYPE FROM TRANSACTION  
GROUP BY TYPE ;`
- (iii) `SELECT NAME , TDATE , AMOUNT  
FROM CUSTOMER C , TRANSACTION T  
WHERE C.ACNO = T.ACNO AND TYPE = 'CREDIT' ;`



37. (a) Write the definition of a function `POP_PUSH(LPop, LPush, N)` in Python. The function should Pop out the last `N` elements of the list `LPop` and Push them into the list `LPush`. For example :

3

If the contents of the list `LPop` are `[10, 15, 20, 30]`

And value of `N` passed is `2`,

then the function should create the list `LPush` as `[30, 20]`

And the list `LPop` should now contain `[10, 15]`

**NOTE :** If the value of `N` is more than the number of elements present in `LPop`, then display the message `"Pop not possible"`.

**OR**

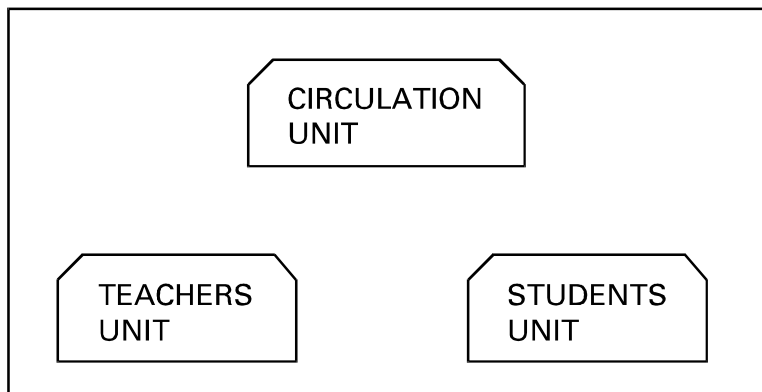
- (b) Write a function in Python `POPSTACK(L)` where `L` is a stack implemented by a list of numbers. The function returns the value deleted from the stack.

3

### Section III

38. A school library is connecting computers in its units in a LAN. The library has 3 units as shown in the diagram below :

5



The three units are providing the following services :

1. Teachers Unit : For access of the Library Books by teachers
2. Students Unit : For access of the Library Books by Students
3. Circulation Unit : For issue and return of books for teachers and students

Centre to Centre distances between the 3 units are as follows :

- Circulation Unit to Teachers Unit – 20 metres
- Circulation Unit to Students Unit – 30 metres
- Teachers Unit to Students Unit – 10 metres

Number of computers in each of the units is as follows :

- Circulation Unit 15
- Teachers Unit 10
- Students Unit 10



- (a) Suggest the most suitable place (i.e. the Unit name) to install the server of this Library with a suitable reason.
- (b) Suggest an ideal layout for connecting these Units for a wired connectivity.
- (c) Which device will you suggest to be installed and where should it be placed to provide Internet connectivity to all the Units ?
- (d) Suggest the type of the most efficient and economical wired medium for connecting all the computers in the network.
- (e) The university is planning to connect the Library with the School Principal's computer which is in his office at a distance of 50 metres. Which type of network out of LAN, MAN or WAN will be used for the network ? Justify your answer.

39. Write SQL statements for the following queries (i) to (v) based on the relations CUSTOMER and TRANSACTION given below :

5

Table : CUSTOMER

| ACNO | NAME    | GENDER | BALANCE |
|------|---------|--------|---------|
| C1   | RISHABH | M      | 15000   |
| C2   | AAKASH  | M      | 12500   |
| C3   | INDIRA  | F      | 9750    |
| C4   | TUSHAR  | M      | 14600   |
| C5   | ANKITA  | F      | 22000   |

Table : TRANSACTION

| ACNO | TDATE      | AMOUNT | TYPE   |
|------|------------|--------|--------|
| C1   | 2020-07-21 | 1000   | DEBIT  |
| C5   | 2019-12-31 | 1500   | CREDIT |
| C3   | 2020-01-01 | 2000   | CREDIT |

- (a) To display all information about the CUSTOMERs whose NAME starts with 'A' .
- (b) To display the NAME and BALANCE of Female CUSTOMERs (with GENDER as 'F') whose TRANSACTION Date (TDATE) is in the year 2019 .
- (c) To display the total number of CUSTOMERs for each GENDER .
- (d) To display the CUSTOMER NAME and BALANCE in ascending order of GENDER .
- (e) To display CUSTOMER NAME and their respective INTEREST for all CUSTOMERs where INTEREST is calculated as 8% of BALANCE .



40. (a) A binary file "**PLANTS.dat**" has structure (**ID**, **NAME**, **PRICE**).
- Write the definition of a function **WRITEREC()** in Python, to input data for records from the user and write them to the file **PLANTS.dat**.
  - Write the definition of a function **SHOWHIGH()** in Python, which reads the records of **PLANTS.dat** and displays those records for which the **PRICE** is more than 500.

5

**OR**

- (b) A binary file "**PATIENTS.dat**" has structure (**PID**, **NAME**, **DISEASE**).
- Write the definition of a function **countrec()** in Python that would read contents of the file "**PATIENTS.dat**" and display the details of those patients who have the **DISEASE** as '**COVID-19**'. The function should also display the total number of such patients whose **DISEASE** is '**COVID-19**'.

5